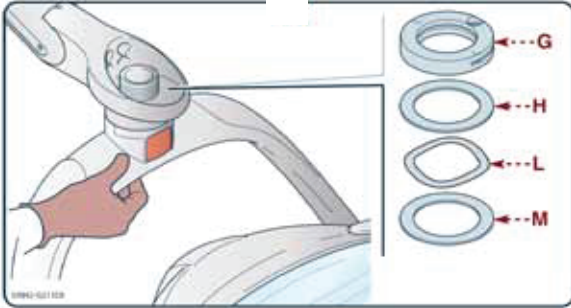


ASSEMBLING THE HEAD TO THE ARM

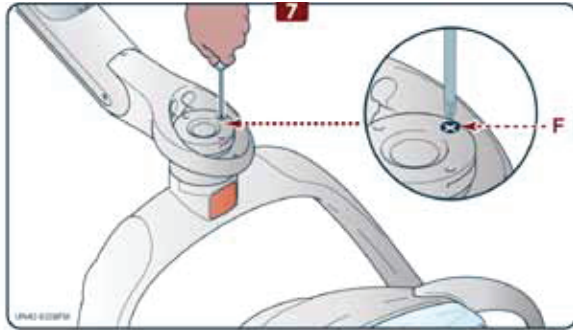


INFORMATION

Follow the assembly sequence of the ring nut and washer indicated in the picture.

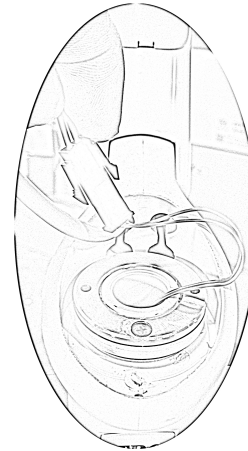
Proceed according to the description given

- Support the head and insert the washers (H), (L), (M).
- Screw the ring nut (G).

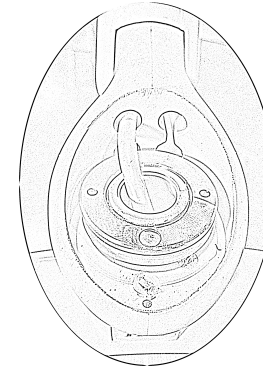


Tighten the safety screw (F) until the proper head rotation resistance is obtained.

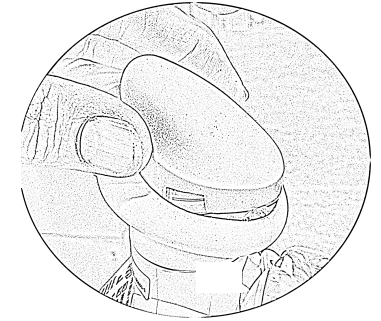
ELECTRICAL CONNECTIONS



Connect wires as shown.

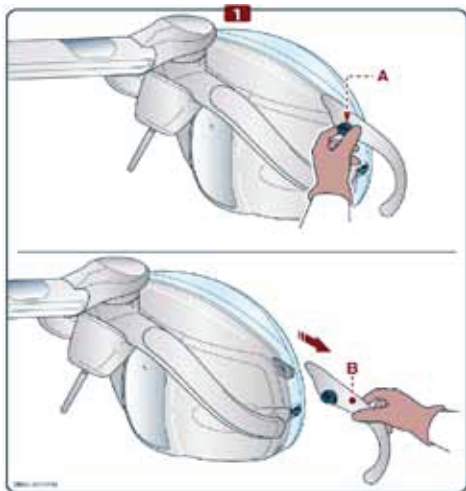


Feed excess wire back into light head.



Install cover cap and secure with supplied screw .

Light Handles



Switch on / off / Adjustment

- To switch the lamp On and Off, press and release the switch to the LEFT or RIGHT side.

When the lamp is switched On / Off, the device will beep (once).

DON'T push and pull the switch. It only moves in a left and right direction.

- Right & Left Light handle
- Light switch toggle extension
- Light shield wrench
- Tension nut / brass spanner nut

Signature _____ Date _____