

TPC

L600-LED Operatory Light Installation and Operation Manual



TPC
851 S. Lawson St
City Of Industry, CA 91748
P. 626-810-4337 Fax 626-810-4245



Table on Contents:

General information

Installation

Overview of components

Operation instructions

Light head and vertical arm adjustment

Replacement Parts List

Cleaning & disinfection guide

Warranty

Troubleshooting Guide

Technical Assistance is available Monday through
Friday, 8:00 AM to 5:00 PM PST.

800 560 82222

TPC

SYMBOLS



DANGER

The paragraphs marked with this symbol contain instructions which must be followed carefully to avoid damaging the device, the operator and the patient.



WARNINGS

These instructions warn the operator that it is mandatory to operate with utmost care to avoid situations which could damage the device.



RESTRICTION

This icon indicates the most appropriate behavior to avoid damaging the device.



RECOMMENDATIONS

This icon indicates useful details for an effective use of the device.



Dispose of the device according to the regulations on separate waste collection of electrical equipment. Directive WEEE 2012/19/EC



Class II device.



Danger warning symbol



Refer to the documentation enclosed..



**ADJUSTMENT
SENSOR**



SERIAL NUMBER



ITEM CODE



STERILISATION

SWITCH SYMBOLS



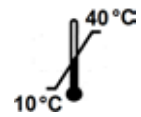
ON



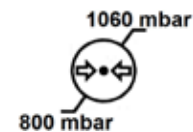
OFF

RELATIVE HUMIDITY

TEMPERATURE



ATMOSPHERIC PRESSURE



Specifications

Input Voltage : AC 24V

Frequency: 50/60Hz

Power : 28W

Illumination: 8000-23000 Lux

Color Temperature:

4000-5000 K can be adjustable

Spot Size:

80 * 160 mm (Distance for 700mm)

Package Contents

1. Light Arm
2. Power Supply
3. Light head (Seperate Box)
4. Lght head handles (Included In Light Head Box)
5. Manual

TPC

Installation Instructions

1. Install Light arm to light post. 1 11/16" Nylon light post bushing is required for a proper fit.



2. Remove adaptor bushing from light arm.



3. Attach adaptor bushing to light head.



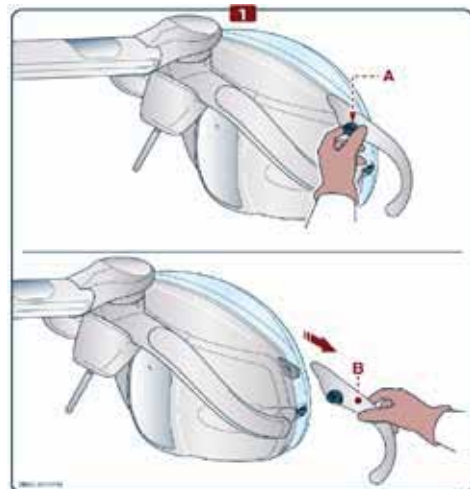
4. Connect power from light arm to light head harness.



5. Secure light head to arm using the allen screw removed in step 2.



6. Attach light handles to the light head.



TPC

Overview of Controls



On/Off switch: Toggle in either direction “Left” or “Right” to turn the light to the “ON” position.

Press and hold in either direction to increase or decrease the intensity of the light.

Note: when the light is powered “off” the light intensity remains at the last setting.



Touch Sense: Gently place your palm on the back of the light towards the bottom of the back cover. This will turn the light on and off.

Leave hand on touch sense pad and the intensity of the light will adjust. When you remove your palm from the back the intensity adjustment will stop.

Note: when the light is powered “off” the light intensity remains at the last setting.

TPC

FEATURES

Versions

- “EDI LED” head can be supplied in the following versions:
- Head with switch
- Head with switch + automatic lighting function
- Head with con proximity sensor
- Head with switch + automatic lighting function
- Light source consisting of two LEDs whose light is mirrored into two parabolic reflectors.
- Reflecting surfaces with parabolic reflectors which allow obtaining a regular uniform spot light at all lighting levels and to uniformly distribute the light in the operating field with no shadows or dark areas created by the operator.
- Light intensity adjustment using a mechanical switch or with a sensor.
- Sensor enables the light to be switched on or off without direct contact, eliminating therefore the possibility of cross-infection.
- “Automatic lighting” function allows the lamp to get switched on automatically whenever the power is enabled.
- Easy maintenance thanks to the application of new technology that takes into consideration various requirements in terms of safety, ergonomics and hygiene.
- Removable handles for sterilization
- Front screen lower significantly internal contamination of the device.
- Electrical connection - Follow the wiring diagrams

TPC

Vertical Arm Adjustment

If you experience a downward drift with your operatory lights' vertical arm please follow the procedure below.

- Remove the end cap cover on the end of the vertical arm closest to the light head. This requires a small Phillips screw driver.
- Turn the nut located at the end of the light arm to adjust the tension.
- Turn the nut clockwise to increase the tension. Turn the nut counter clockwise to decrease the tension.
- If your vertical light arm drifts down then you need to increase the tension.
- If the vertical light arm drifts back up you need to adjust the friction screw. Only adjust the friction screw in quarter turns.

Tension Nut

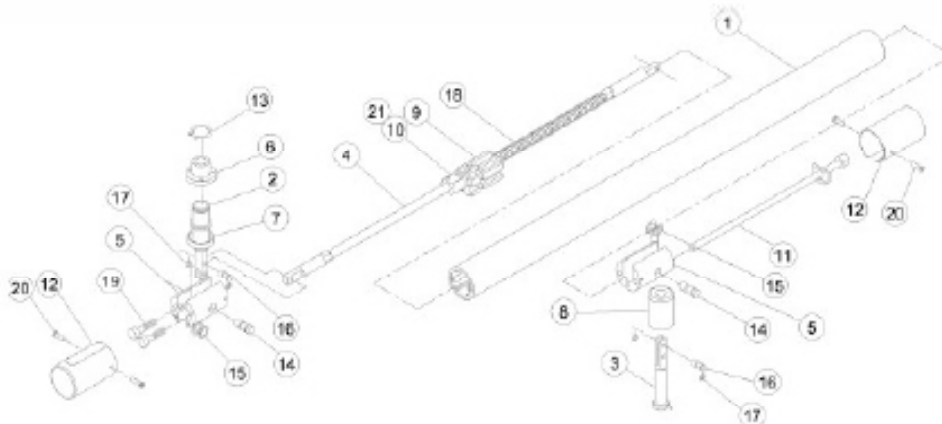


Friction Screw



TPC

TPC



Item	Part Number	Description
1	56021	Cover Flex Arm
2	56022	Knuckle, Rigid Arm
3	56023	Knuckle, Head
4	56024	Spring Rod
5	56025	Extension Support
6	56026	Bushing
7	56027	Bezel
8	56028	Bushing
9	56029	Block Spring Tensioner
10	56030	Friction Block
11	56031	Tensioner Rod
12	56032	End Cap Cover
13	56033	Retainer Ring
14	56034	Long Pin
15	56035	Retainer Ring Small
16	56036	Short Pin
17	56037	Retainer Ring Small
18	56038	Spring
19	56039	Screw Cap Head Socket
20	56040	Screw, End Cap
21	56041	Friction Screw



Cleaning and Disinfecting Guide

*The Manufacturer makes no representation as to the disinfectant efficacy of these products. We make no warranty expressed or implied that these disinfectants will not damage the surface finishes. Damage and discoloration of the surface finishes are not covered under the warranty. Iodophor based disinfectants will cause yellow staining on many surfaces. Regular washing with soap and water will minimize this staining. Iodophor neutralizers such as Promedyne are also available.

<p>Unacceptable Disinfectants</p> <p>These disinfectants will harm the surface finishes of dental equipment and are not recommended.</p> <p>Use of these products will void your warranty.</p> <p>Chemical Composition / Trade Names</p> <p>Strong Phenols / Lysol, Lysol 2, Lysol Phenol Alcohol Professional, Coe Foam, Coe combinations Spray Pump, Vitaphene, Omni II</p> <p>Sodium Hypochlorite / Clorox, Ajax, Purex</p> <p>Household Bleach</p> <p>Alcohol</p> <p>Household Cleaners</p>	<p>Conditionally Acceptable Disinfectants</p> <p>These disinfectants have been found to be the least harmful to the equipment surfaces by our test methods.</p> <p>Chemical Composition Trade Names</p> <p>Iodophors Biocide, Aseptic IDC, Wescodyne, SD5, Promedyne, Iodo Five</p> <p>Mild Phenols Procide ES, Asepti Steryl</p> <p>Aerosol</p> <p>Glutaraldehyde / Sterall Spray, Coldspor</p> <p>Phenol Sprays</p> <p>Synergized Super Dis cide, Cavicide, Kleenaseptic</p> <p>Quat</p> <p>Phenol/Water Sprays Top Cide, Sporicidin Pump</p> <p>Spray</p> <p>Birex se</p>
---	--



Warranty Information

LED Operatory lights are guaranteed to be free from defects in workmanship and materials for a 2 years from date of purchase, unless otherwise stated. TPC will repair or replace any defective “part” at no charge. TPC will not be responsible for labor charges or shipping charges to / from the TPC facility. This guarantee does not cover normal wear or stains on surface finish. The guarantee does not cover damage resulting from improper installation, misuse or accidents incurred in shipping and handling. All claims against the freight carrier must be initiated at the time the damaged items are received. The claim is the responsibility of the customer. We are improving our products on a continuous basis. We reserve the right to make modifications without the need for prior notification and are not obliged to modify previously manufactured items. Light bulbs are not covered under any type of warranty. Only authorized service technicians should attempt to service TPC equipment. Service performed by any unauthorized technician may result in a voided warranty.

Troubleshooting guide

Problem	Cause	Solution
Light does not illuminate	No power to light	Check power
	LED has expired	Replace LED
	Transformer is expired	Replace transformer
Light turns on and off then the light head is moved	Open in line power	check light head to ridge arm connector. Inspect arm wire.
Vertical arm drifts down	Tension needs to be increased in arm	tighten arm tension adjustment
Verticle arm drifts up	Friction arm adjustmnet loose	Tighten friction arm adjustment
Light drifts from left to right	Light post not level	Level unit / light post