

Mirage Model 4000 Hydraulic Patient Chair



Roller Bearing Replacement Procedure

TPC

18525 E. Gale Ave

City Of Industry, CA 91748

P626-810-4337 Fax 626-810-4245

www.tpcdental.com

1. The first step that you want to perform when replacing the roller bearing on the dental chair is to remove the upholstery from the chair. Place the upholstery aside out of your way. To remove the seat cushion from the chair remove the two Allen screws from the toe of the chair.

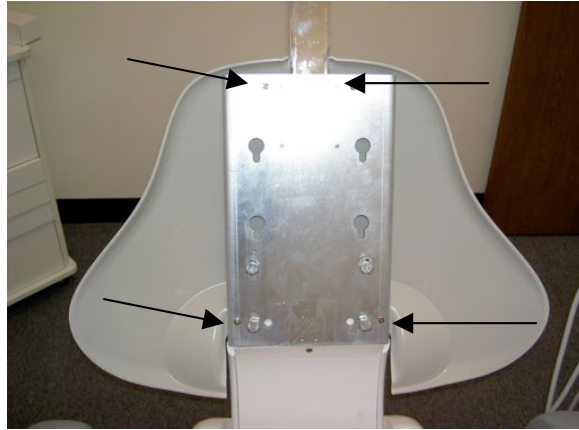


2. Remove the backrest upholstery from the dental chair by sliding the back rest upholstery up to remove it.

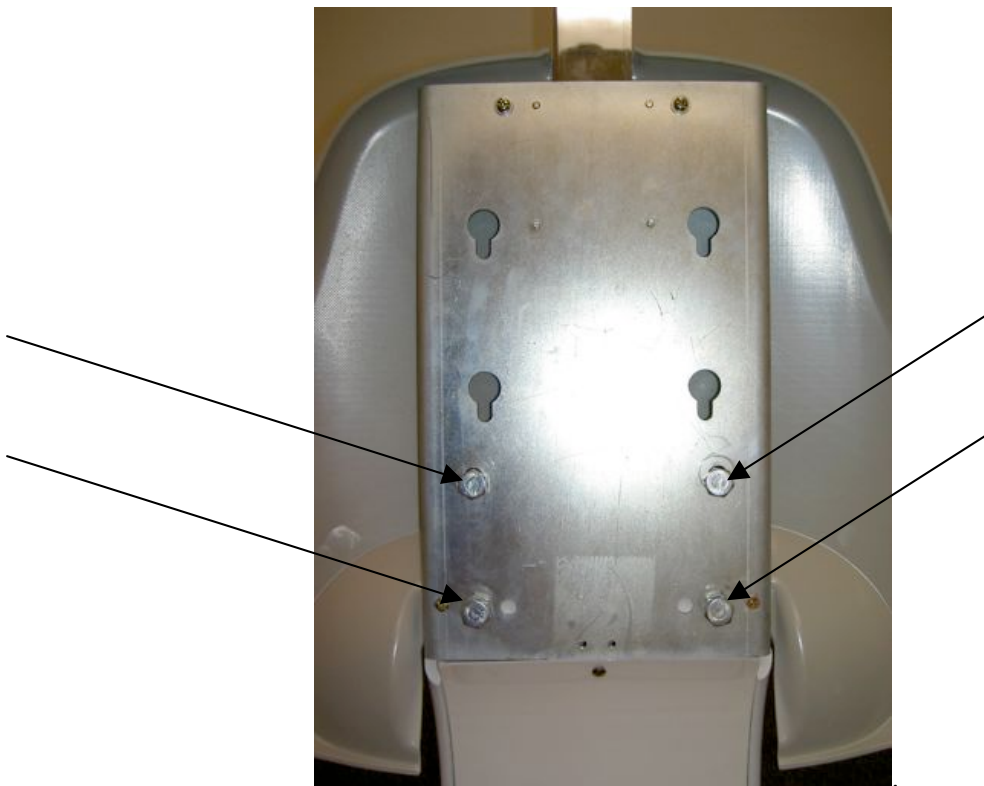


3. Remove the backrest frame from the dental chair. You may also want to remove the outer plastic backrest cover to prevent damage. Remove the 4 Phillip head screws from

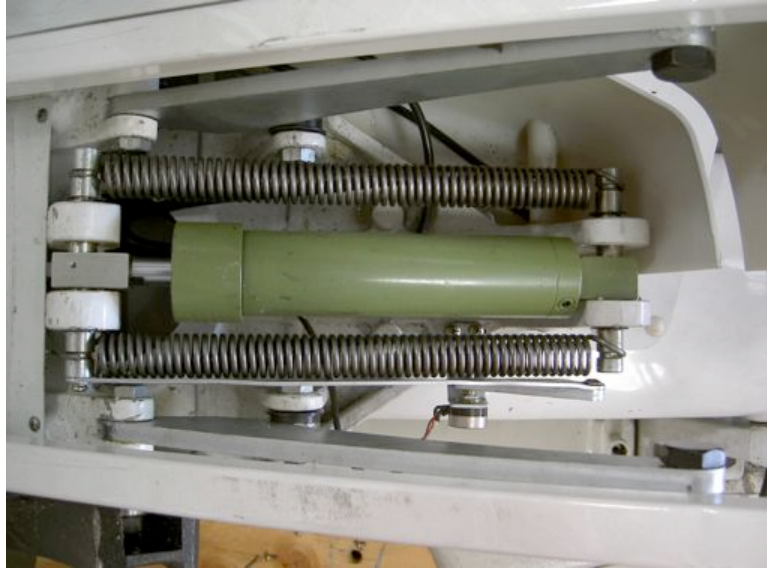
the backrest plastic cover. Remove the two bottom screws first then the two top screws. Set it aside.



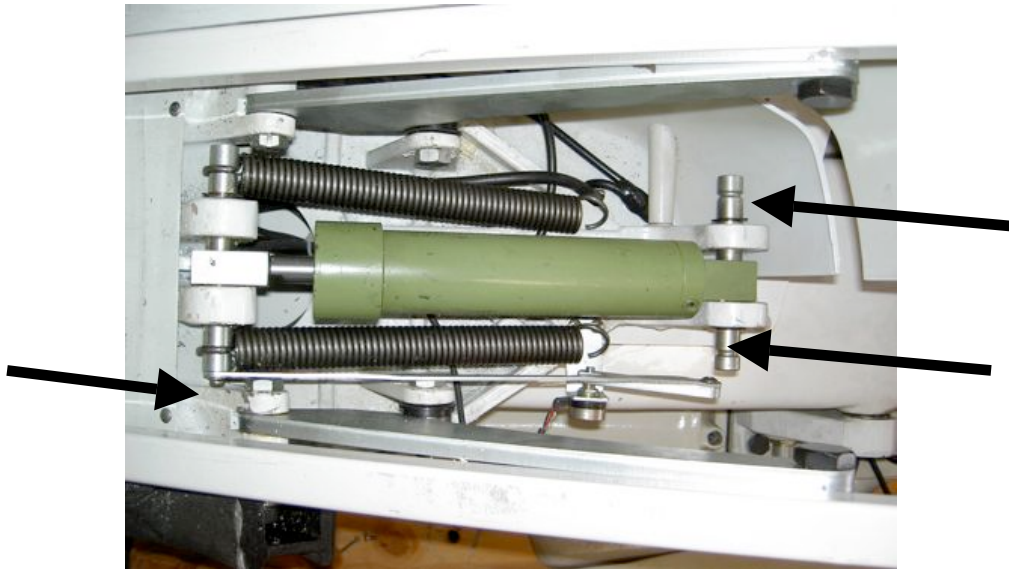
4. Then remove the backrest bracket. Loosen and remove the 4 bolts that attach the backrest frame to the cast on the chair.



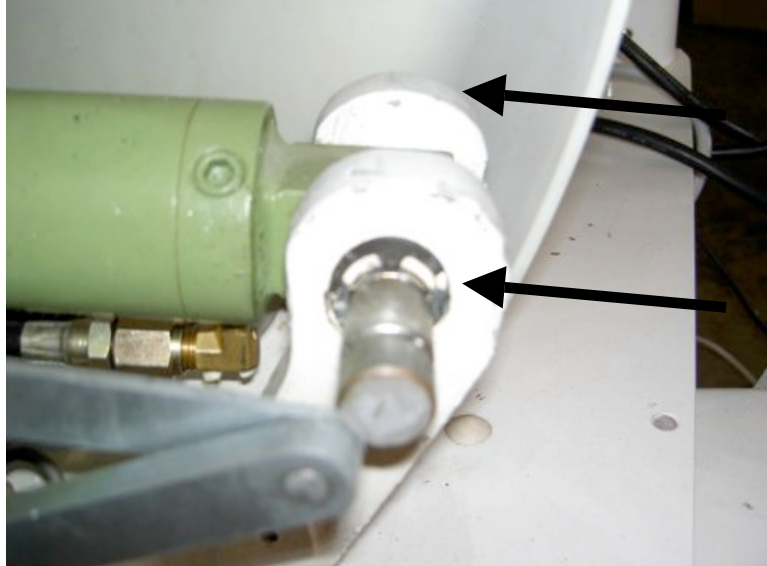
5. Now with the backrest and upholstery removed, recline the backrest to lowest possible position to release the tension on the return springs.



6. Un latch the return springs from the pin that it attaches to. Also remove the screw that attaches the POT ARM to the rear hydraulic ram pin.



7. Remove the E-Clips that attach the hydraulic to the cast of the chair. There are two of these clips. 1 located on each side of the pin.



8. At this point your disassembly should look similar to this.



9. Now attempt to pull the backrest cast out of the track that guides it. If the backrest gets stuck on the seat cushion frame you may need to remove it. To do this remove the two bolts that hold the seat cushion frame in place.



10. Now the backrest cast should pull out freely from the track. Once you remove it you should be able to locate the 4 roller bearings that allow the backrest frame to travel inside the track. There are 2 bearing on each side of the cast.



11. Remove the 4 bearings with an Allen wrench and replace with new bearings. Once the bearings are replaced slide the backrest cast back into the track that it travels in.
12. Once the backrest cast is back in place, check to see if the backrest slides from side to side. If it does then adjust the backrest guides shown below.



13. Once all adjustments are made you may begin to re-assemble the chair.